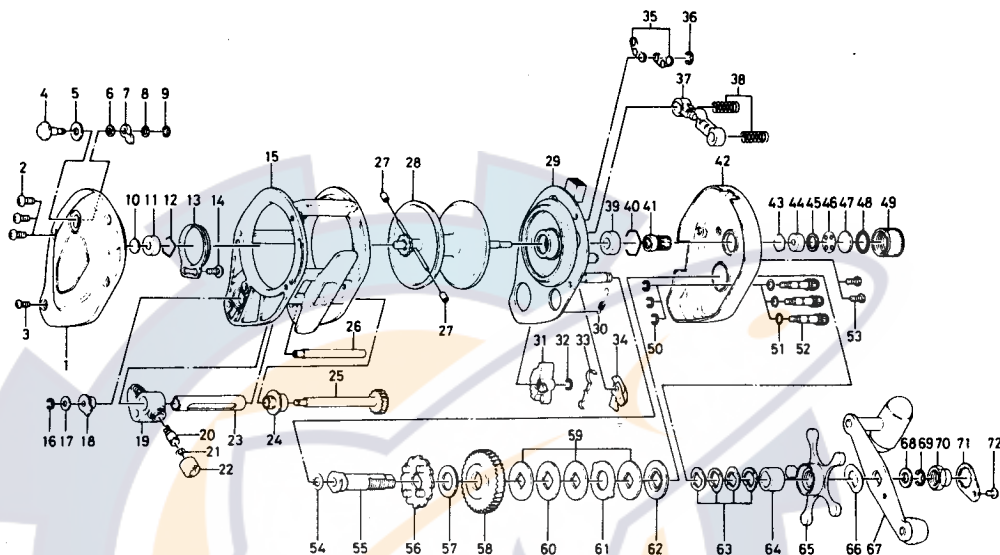


BAITCASTING REEL **PS57**



Key No.	Parts No.	Parts Name	Key No.	Parts No.	Parts Name
1	B66-9501	Left side cover	37	B65-1301	Pinion yoke
2	351-6408	Left side cover screw A	38	B74-0201	Pinion yoke spring
3	B36-0401	Left side cover screw B	39	B10-3801	Bearing
4	B65-4001	Click button	40	B27-0501	Bearing retainer
5	B40-3101	Click button washer	41	B66-9001	Pinion gear
6	375-4301	Click claw washer A	42	B66-8903	Right side plate
7	B20-9301	Click claw	43	B35-8701	Bearing retainer
8	373-1300	Click claw washer B	44	B54-6401	Bearing
9	320-5901	Click claw retainer	45	502-0901	Bearing ret. ring
10	375-7405	Bearing metal washer	46	373-7502	Bearing ret. washer A
11	637-5601	Bearing	47	374-7221	Rubber washer
12	B09-5601	Bearing retainer	48	B05-5201	"O" ring
13	B20-9101	Click spring	49	B14-6601	Right spool cap
14	352-2201	Click spring screw	50	320-8202	Right side plate screw retainer
15	B73-0601	Frame	51	B43-2301	Right side plate screw washer
16	320-5901	Worm shaft retainer	52	B64-8001	Right side plate screw A
17	373-1302	Worm shaft holder washer	53	351-1801	Right side plate screw B
18	B09-9701	Worm shaft holder	54	B47-9502	Gear shaft washer A
19	B57-8701	Line guide	55	B65-1801	Gear shaft
20	B71-0101	Line guide pin	56	B65-1901	Ratchet
21	375-4100	Line guide washer	57	B65-2101	Gear shaft washer B
22	342-4801	Line guide nut	58	B66-9401	Drive gear
23	B73-0201	Worm shield	59	B36-0203	Drag washer A
24	B36-1201	Shield bush	60	B65-2301	Drag washer B
25	B73-0002	Worm shaft	61	372-3833	Drag washer C
26	B72-9901	Frame post	62	B65-2501	Drag washer D
27	B35-2701	Brake collar	63	B65-2601	Drag spring washer
28	B73-0701	Spool	64	B65-2701	Spacing sleeve
29	B64-8702	Set plate	65	B66-9201	Star drag
30	B35-8901	Anti-reverse claw spring	66	B65-3101	Handle washer
31	B65-0601	Anti-reverse lever	67	B84-8701	Handle
32	320-4202	Anti-reverse claw retainer	68	375-3002	Handle nut washer
33	B65-0501	Anti-reverse lever spring	69	320-8002	Handle nut retainer
34	B74-0501	Anti-reverse claw	70	B66-2501	Handle nut
35	B36-9101	Set plate spring	71	B66-2601	Handle nut plate
36	320-1402	Clutch ret. ring	72	353-8302	Handle nut plate screw